

# Facing Change: How Can Higher Education Adapt and Move Forward in our Midwest Region

Nathan D. Grawe | *Carleton College*

---

# Challenges We Face



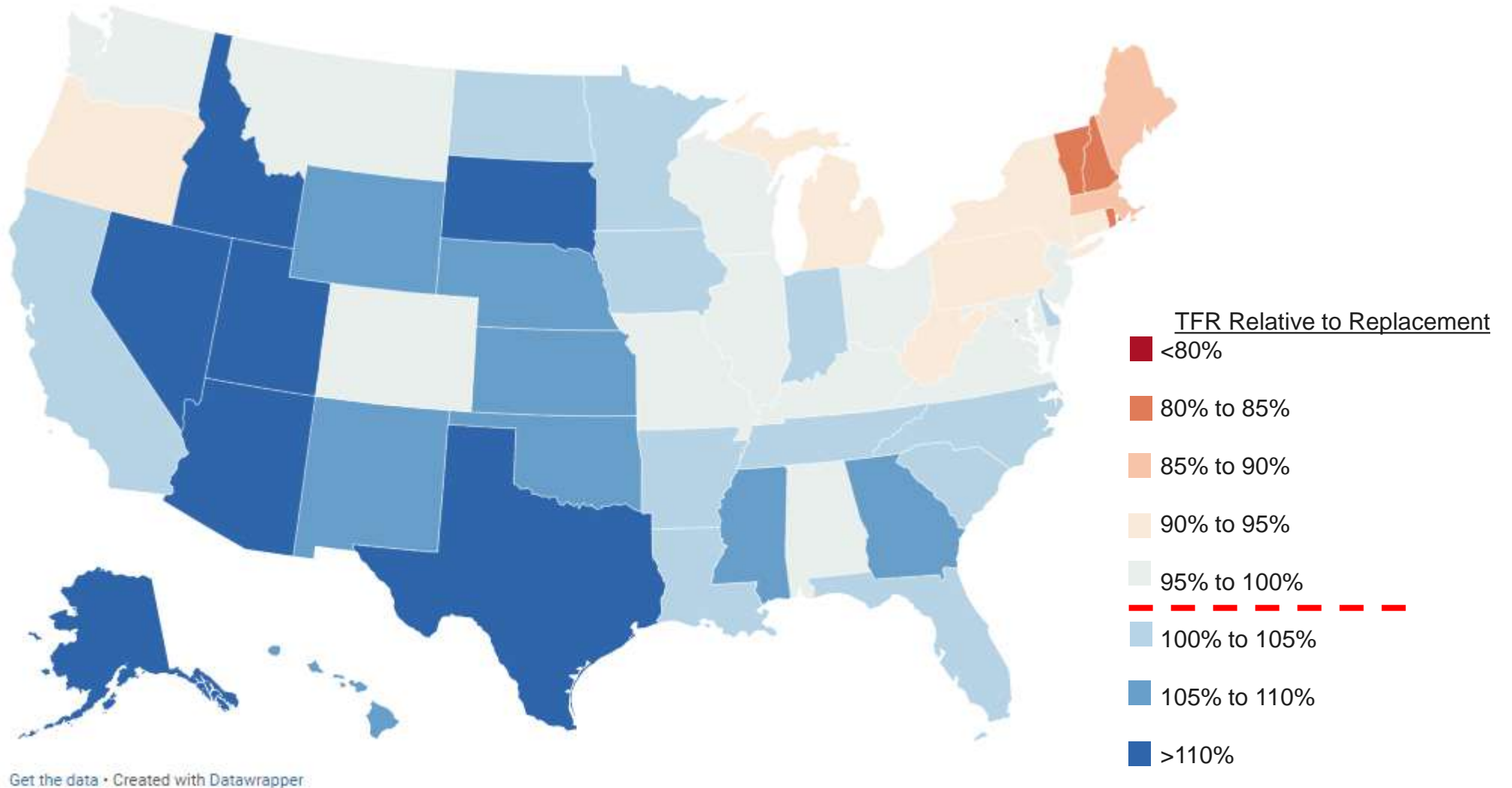
Source: William H Frey analysis of U.S. Census population projections released March 13, 2018 and revised September 6, 2018

**B** Metropolitan Policy Program  
at BROOKINGS

## Year When Non-Hispanic Whites Become Minority

- Tipping-point year around mid-century
- Younger generations are more diverse
- Those under 18 have already passed tipping-point year
- Those of traditional college-going age reach tipping point in next decade.

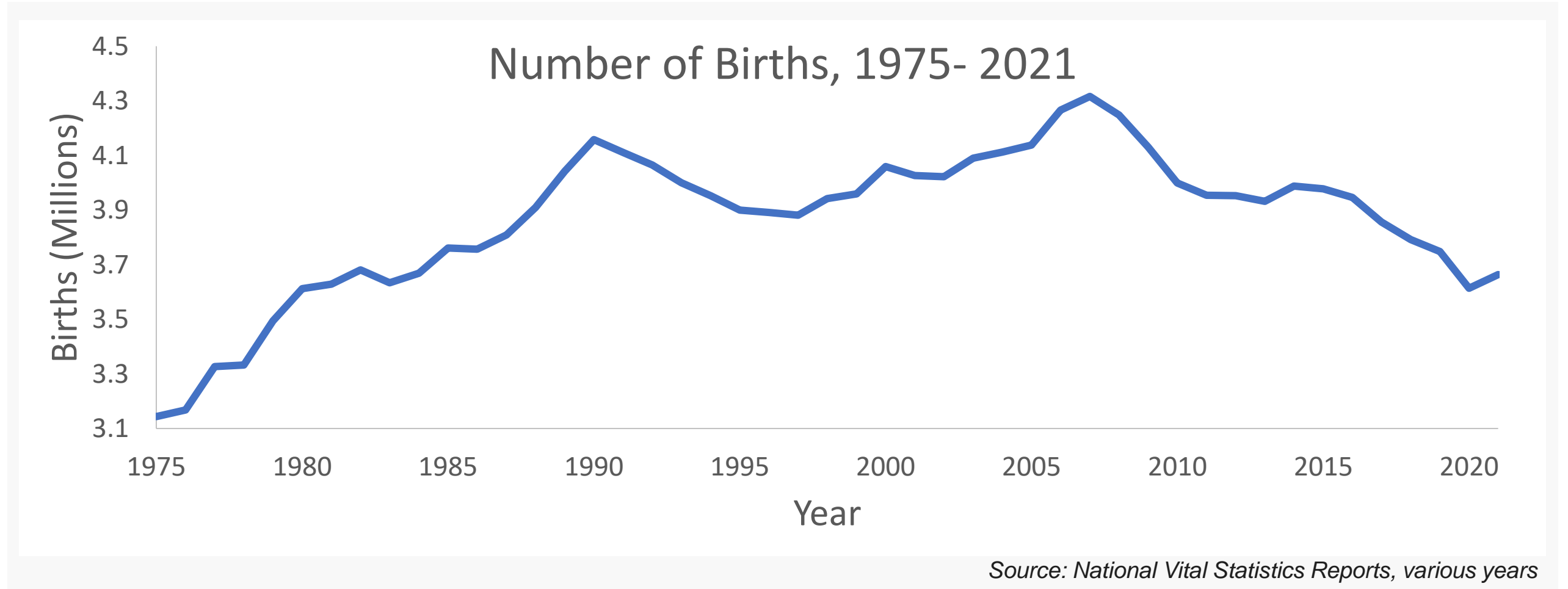
# Total Fertility Rate per 1000 Women, 2007



Source: National Vital Statistics Reports Vol. 58, no. 24

# A History of US Births

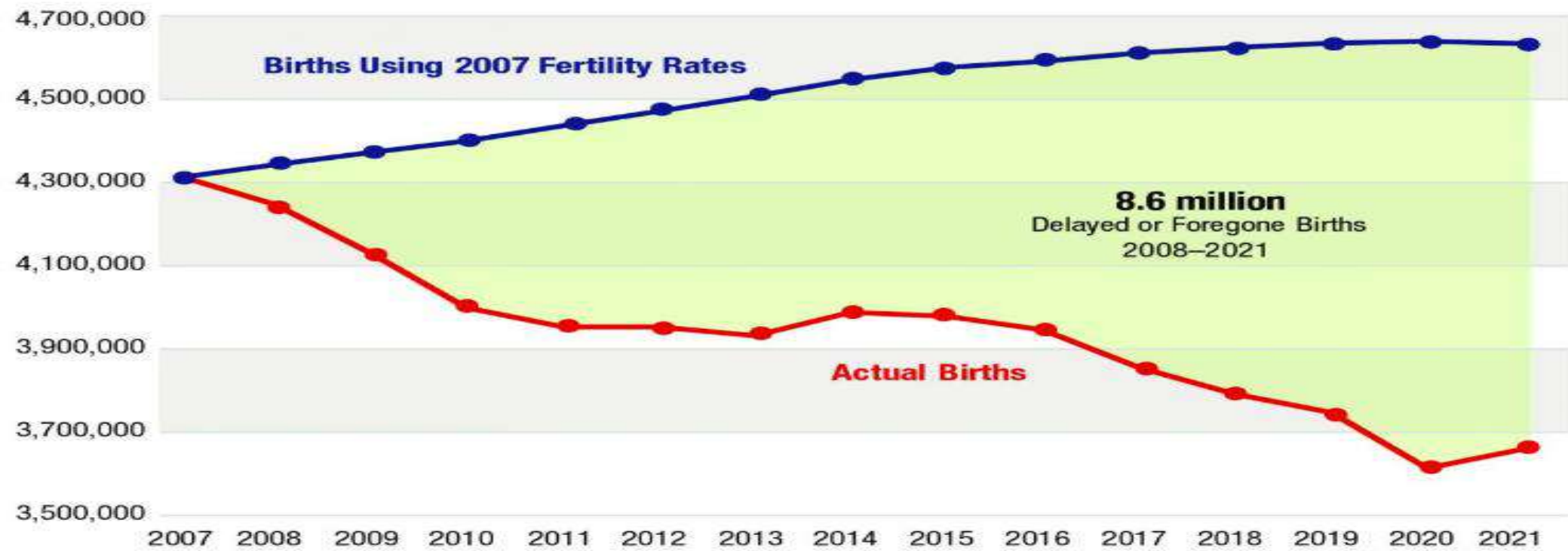
In 2020, births reached a 40-year low.



# Consequence of Fertility Decline

Cumulative total: 8.6 million delayed or foregone births

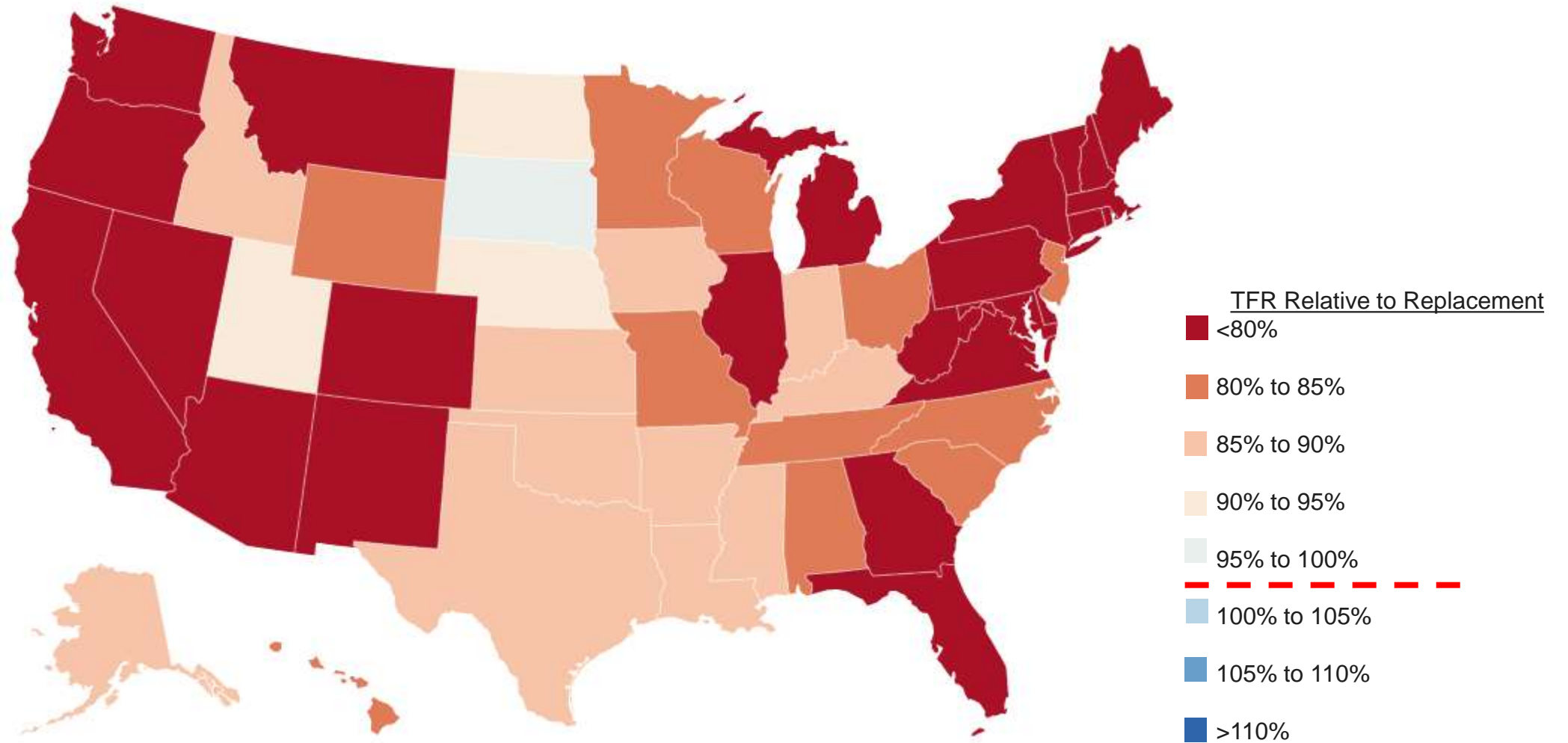
Actual Births Compared to Births Using 2007 Fertility Rates, 2008 to 2021



Source: National Center for Health Statistics, 2021

Source: Kenneth M. Johnson (2021)

# Total Fertility Rate per 1000 Women, 2021



Get the data • Created with Datawrapper

Source: National Vital Statistics Reports Vol. 72, no. 1

---

# We've entered a new age.

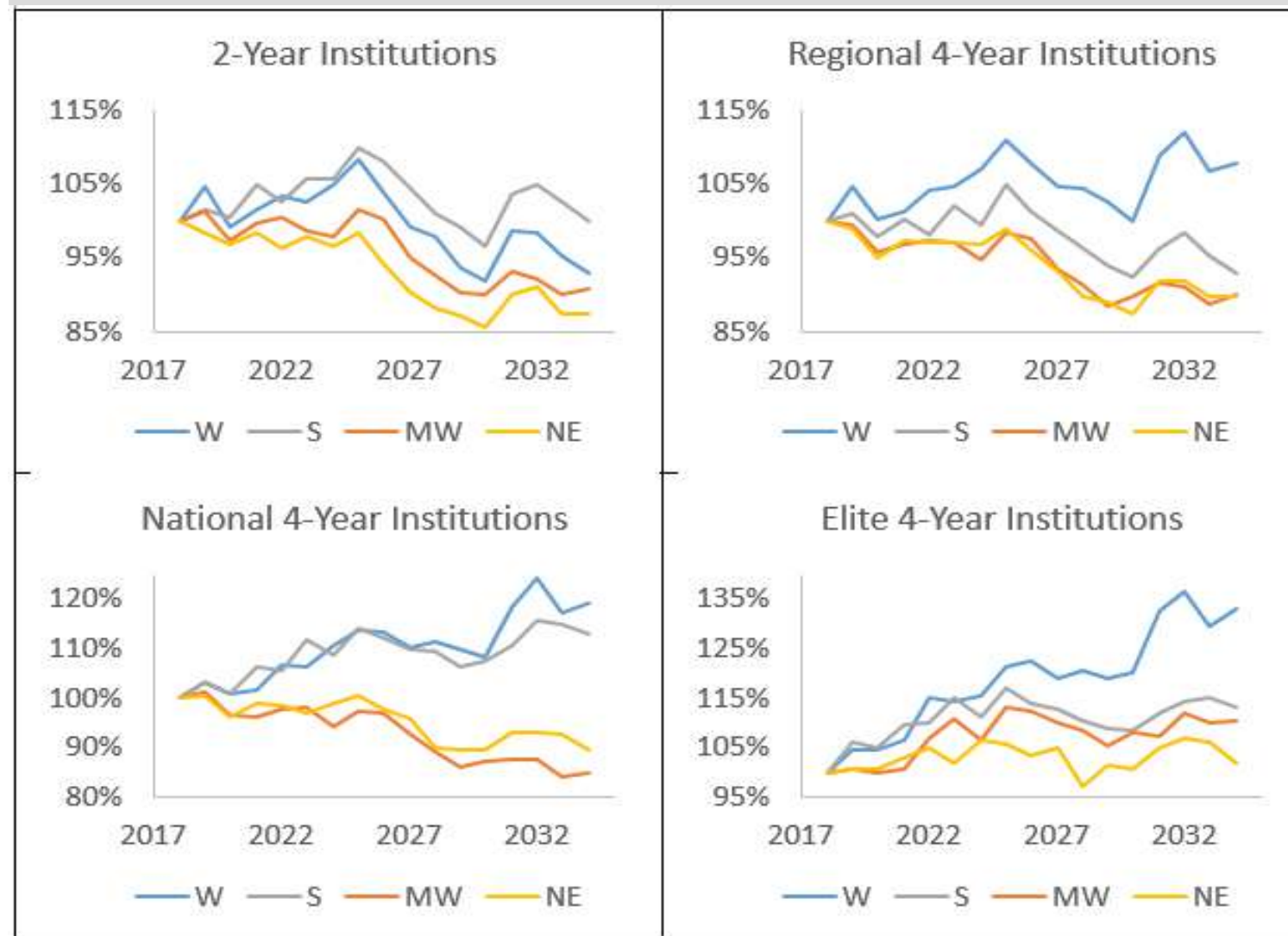
“Until just a few years ago, colleges could anticipate classes of high-school graduates each bigger than the last.... But those days are over.”

Sara Lipka,

*Chronicle of Higher Education (2014)*

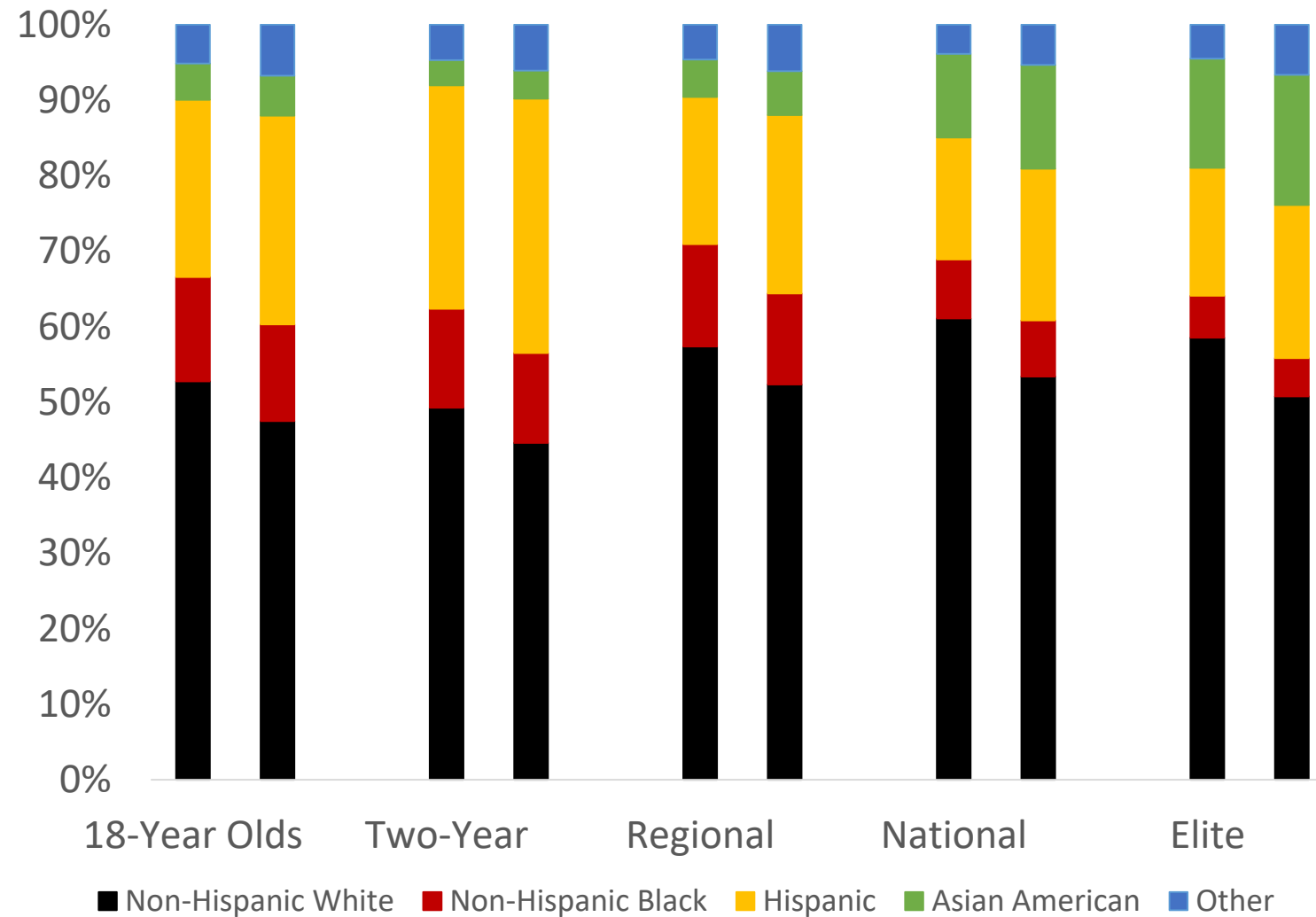


## Projected Number of College-Going Students Relative to 2018, by Region



Source: Author's calculations based on data from the American Community Survey (2017), Centers for Disease Control and Prevention National Vital Statistics Reports (2018, 67(7)), 2009 High School Longitudinal Study (restricted and unrestricted), and the Panel Study of Income Dynamics (2011; 2015)

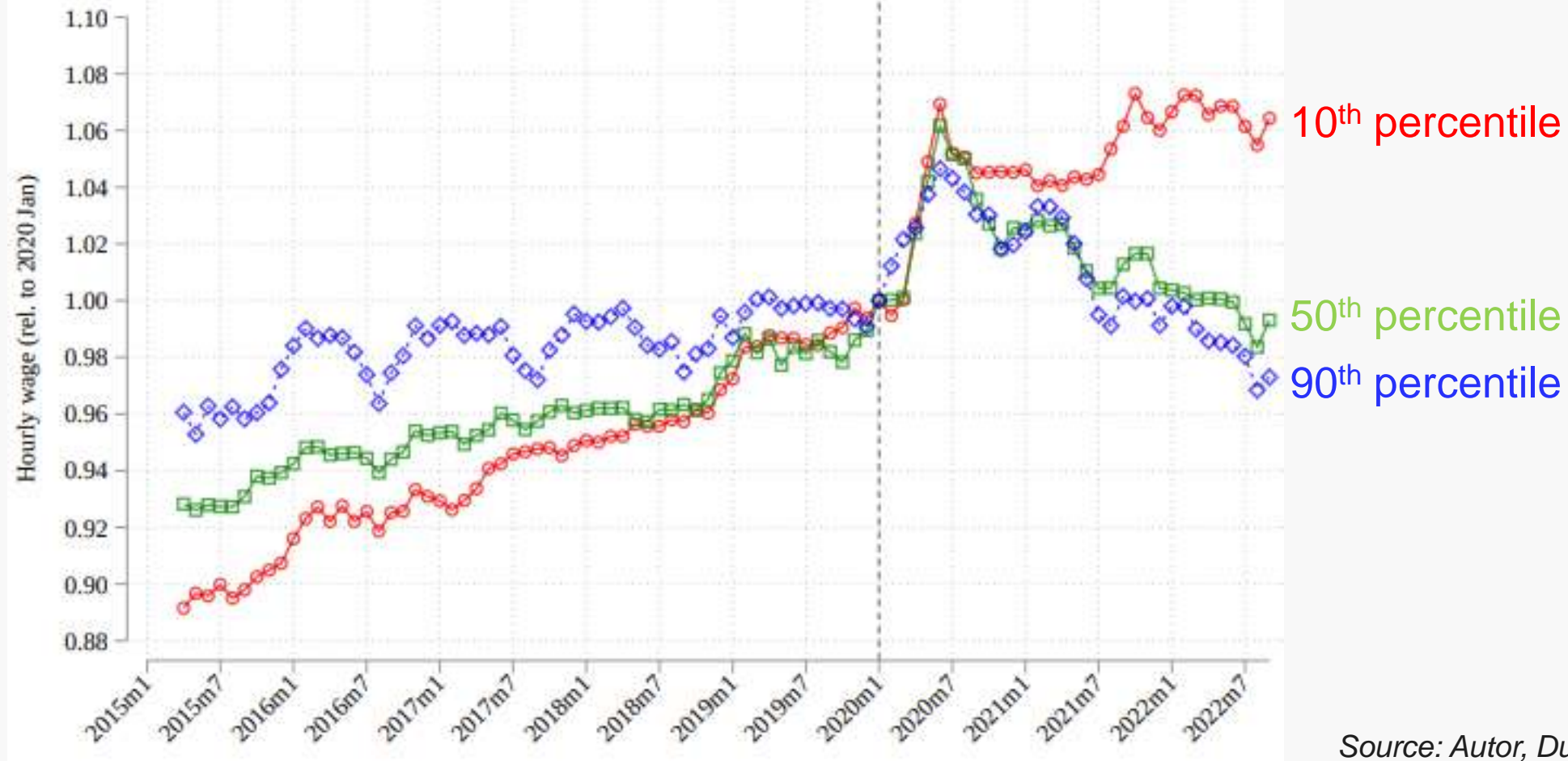
# Race/Ethnicity Distribution of College-Going Students. 2018/19 and 2033/34



Source: Author's calculations based on data from the American Community Survey (2017), Centers for Disease Control and Prevention National Vital Statistics Reports (2018, 67(7)), 2009 High School Longitudinal Study (restricted and unrestricted), and the Panel Study of Income Dynamics (2011; 2015)

# Real Hourly Wages, Relative to January 2020

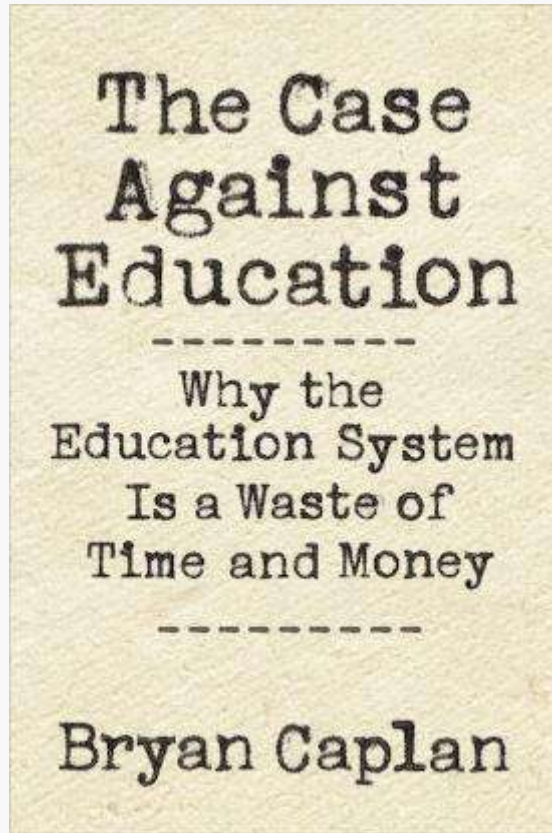
Wage compression → declining return to college degree



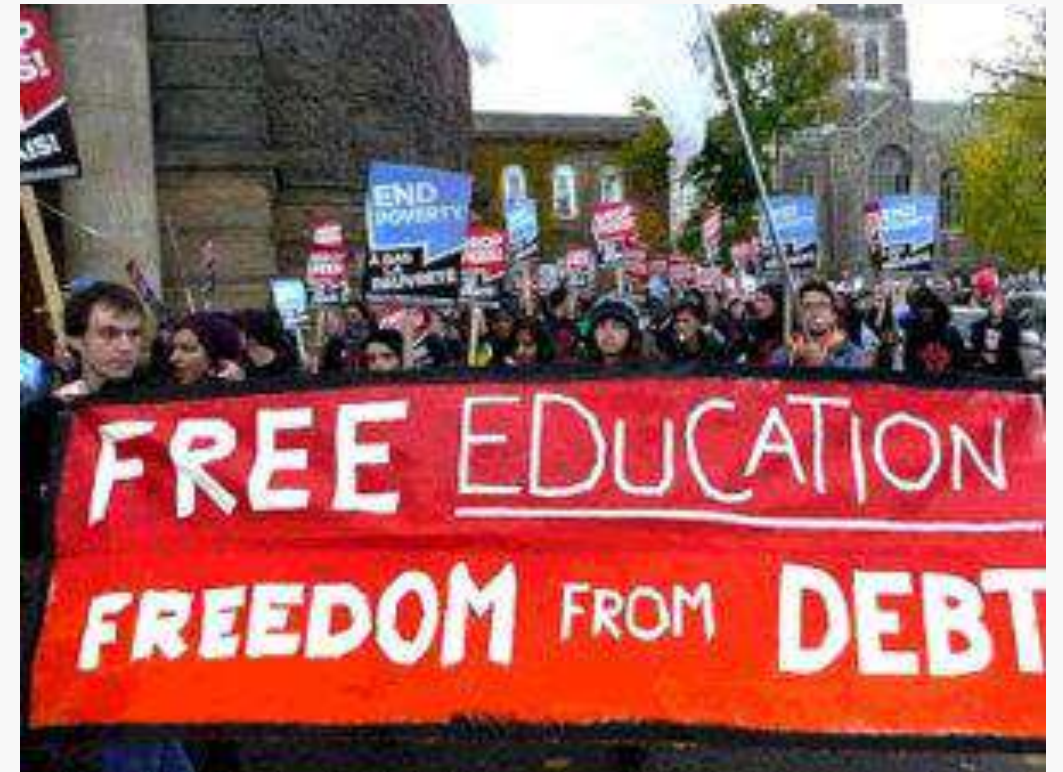
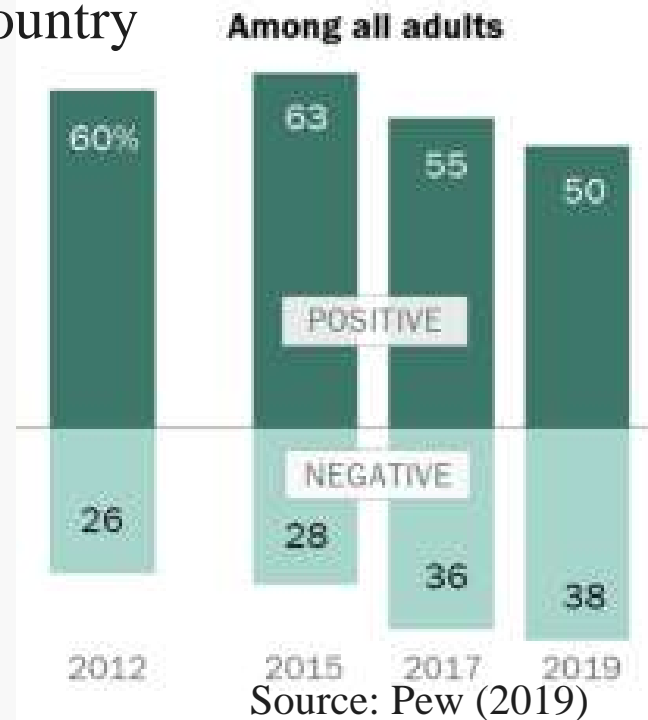
Source: Autor, Dube, and McGrew 2023

# Cultural Trends

Evidence of higher ed's exceptional ROI is questioned.



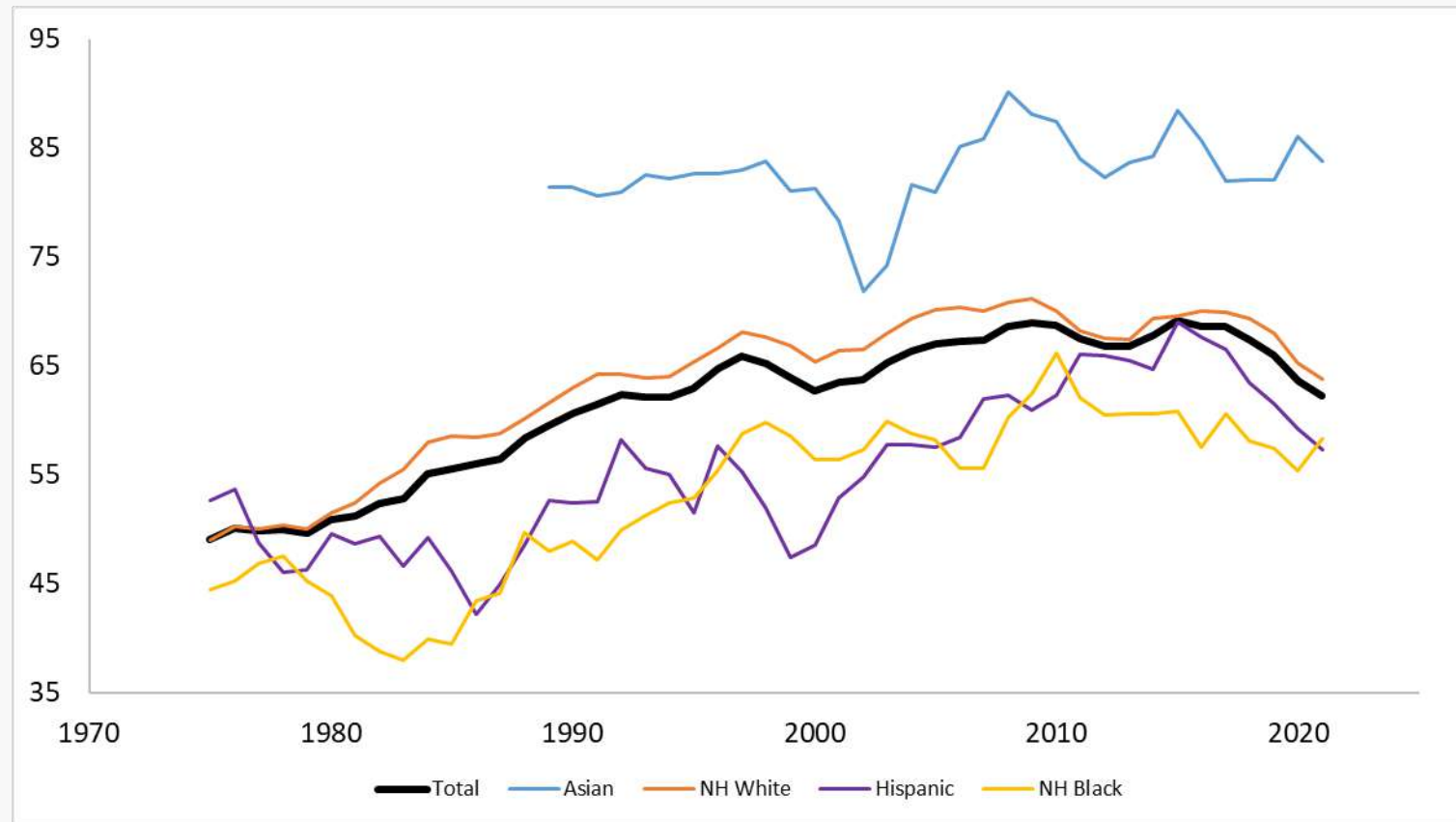
Share of Americans saying colleges and universities have a \_\_\_\_ effect on the way things are going in the country





# Postsecondary Enrollment among HS Graduates (3-Year Average), 1975-2021

## Declines pre-date COVID



Source: Digest of Education Statistics (n.d.)

---

# Higher Education Responds

# Approaching Examples from Others

Importance of mission/context & accountability

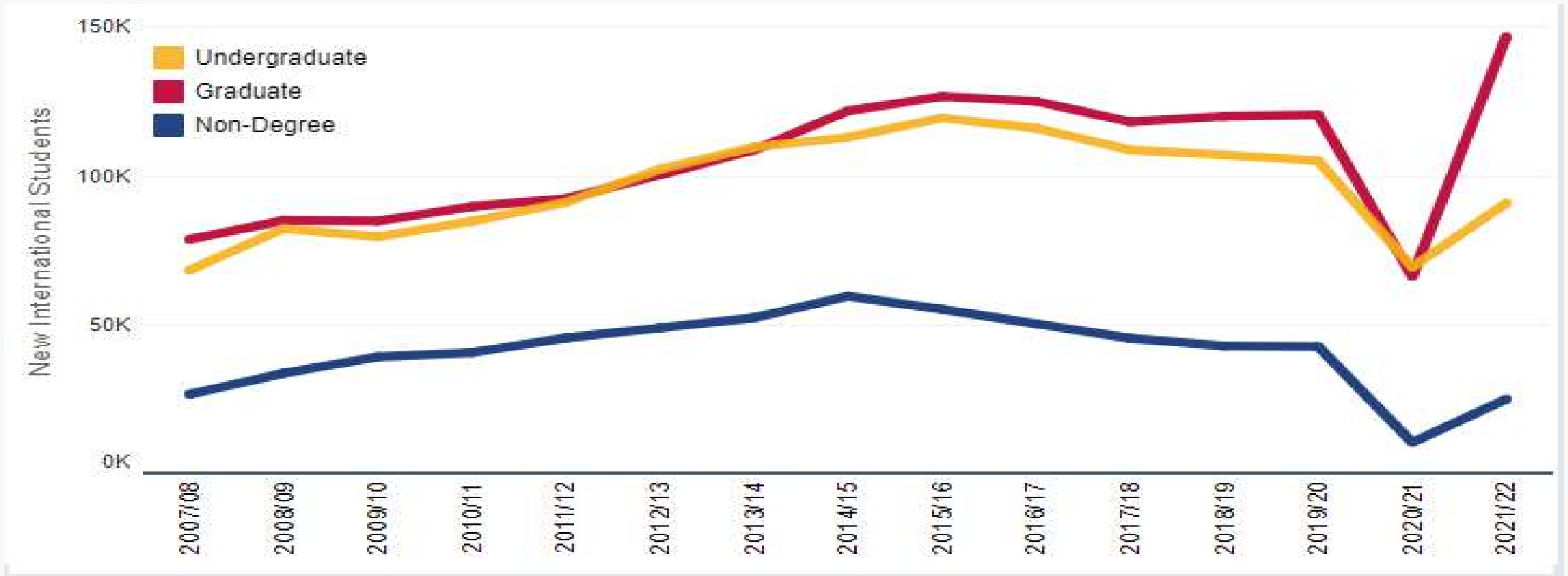


 Institute for  
Healthcare  
Improvement

**100k**  
*lives*

# New International Student Enrollments 2007/08-2021/22

Evidence of increased competition



Source: Institute of International Education (2022)



# Preparing for a Turn to New Student Groups



Pam Eddinger  
President, Bunker Hill  
Community College

“Unless we have had professional development along the way that invites us to think about equity work, a lot of educators are caught within the questions ‘Why aren’t you bringing me the right students? What is wrong with students today?’... Unless you are deeply reflective institutionally, you don’t go to question [ingrained practices].”

# Reconsidering Self-Identity

Separating core mission from sacred cows

OFFICIAL NEWS RELEASES

## New John Dee Bright College at Drake University to Offer Two-Year Degrees

🕒 SEPTEMBER 1, 2020



John Dee  
**Bright College**

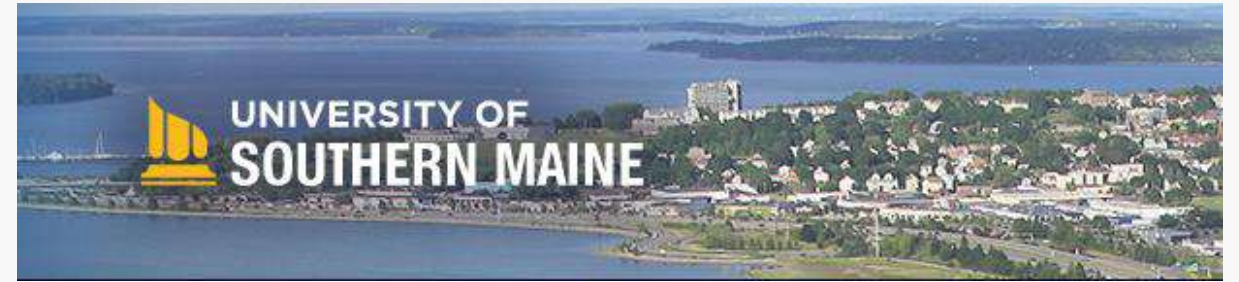
**Drake**  
UNIVERSITY

# Attention to Student Success



**CSUDH**

MALE SUCCESS ALLIANCE



THE STATE UNIVERSITY OF NEW JERSEY  
**RUTGERS**

# Academic Programming

## From College to Life: Relevance and the Value of Higher Education

May 2018

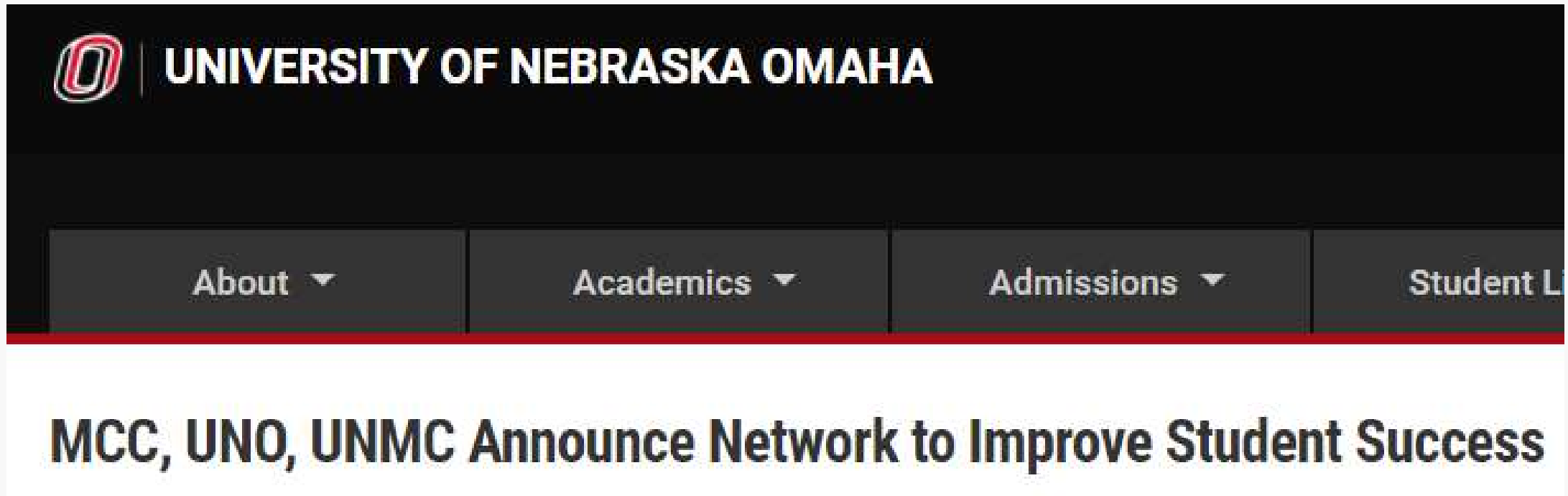


GALLUP®

- **Relevance strongly predicts value and quality.** The more relevant people find their courses to be to their work and daily lives, the greater their belief that they received a high-quality education and that it was worth the cost. Compared with those who strongly disagree, consumers who strongly agree that the courses they took are relevant to their careers and lives are:
  - 63 percentage points more likely to strongly agree that their education was worth the cost.
  - 50 percentage points more likely to strongly agree that they received a high-quality education.

# Collaboration

Shared mental health providers



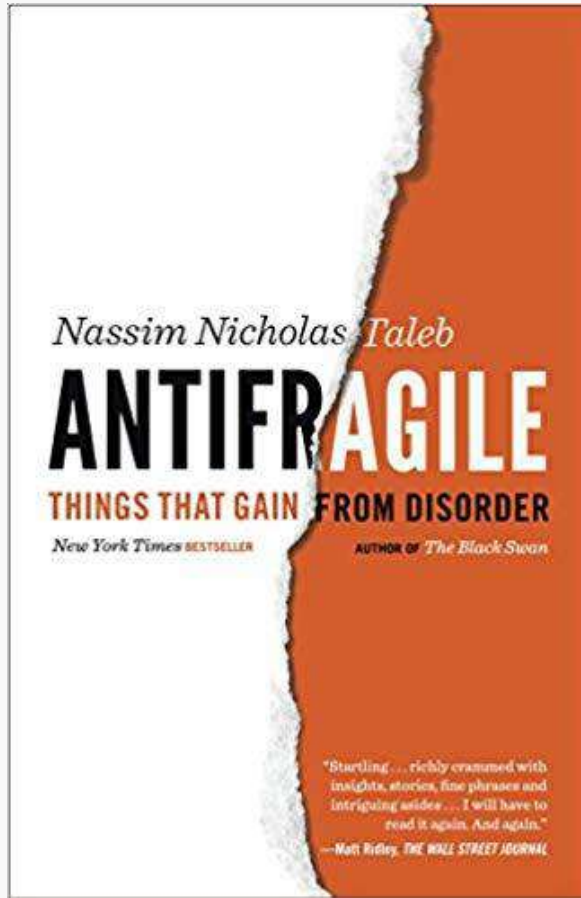


# Collaboration

System collaboration



# A Constructive Metaphor



“Antifragility is beyond resilience or robustness. The resilient resists shocks and stays the same; the antifragile gets better.”

# Thank You

Nathan D. Grawe | *Carleton College*



# Data Sources

- Autor, David, Arindrajit Dube, and Annie McGrew. 2023. "The Unexpected Compression: Competition at Work in the Low Wage Labor Market," NBER Working Paper w31010.
- Bailey, Martha J., Janet Currie, and Hannes Schwandt. 2022. "The Covid-19 Baby Bump: The Unexpected Increase in U.S. Fertility Rates in Response to the Pandemic." NBER Working Paper 30569.
- Centers for Disease Control and Prevention. Various years. *National Vital Statistics Reports*.
- Institute of International Education. 2022. "New International Students Enrollment, 2007/08-2021/22" *Open Doors Report on International Educational Exchange*.
- National Student Clearinghouse Research Center. 2022. "COCID-189 *Stay Informed*" October 20, 2022.
- Pew Research Center. 2019. "The Growing Partisan divide in Views of Higher Education." <https://www.pewresearch.org/social-trends/2019/08/19/the-growing-partisan-divide-in-views-of-higher-education-2/>
- Panel Study of Income Dynamics, public use dataset. Produced and distributed by the Survey Research Center, Institute for Social Research, University of Michigan, Ann Arbor, MI 2019.
- Ruggles, Steven J., Sarah Floor, Ronald Goeken, Josiah Grover, Erin Meyer, Jose Pacas, and Matthew Sobek. 2019. *IPUMS USA: Version 9.0 American Community Survey*. Minneapolis: IPUMS.
- United States Census Bureau. "Summary File." *2017 American Community Survey*. U.S. Census Bureau's American Community Survey Office, 2019.
- U.S. Department of Education, National Center for Education Statistics, High School Longitudinal Study of 2009 (HSLs:09), "Base Year, 2009."
- U.S. Department of Education, National Center for Education Statistics, High School Longitudinal Study of 2009 (HSLs:09), "First Follow-up, 2009."
- U.S. Department of Education, National Center for Education Statistics, High School Longitudinal Study of 2009 (HSLs:09), "Second Follow-up, 2016."