

*IT Leadership Launchpad Series:  
Transforming Real-World  
Challenges into Triumphs*

# Connecting the Dots: Holistic Approaches to IT Challenges

November 12, 2024



Host: Deb Kidwell,  
Director of Technology  
Initiatives, MHEC



Any resources available  
will be posted on the  
MHEC website post-event.



Raise your hand, let's  
make this interactive.



OR submit your  
questions in the chat.



Please complete our  
survey.

# Learn More - MHEC Technologies Community

- The Technologies Community engages IT innovators and specialists from services areas for technology, academia, students, and administration. The community provides strategic guidance to MHEC on technology-related topics in support of the mission of higher education institutions and states in the Midwest.
- Navigate to: <https://www.mhec.org/tech-community>
- Contact Deb Kidwell to get involved: [debk@mhec.org](mailto:debk@mhec.org)

# *Conveying the Value of Information Technology*

- A peer guide to IT governance, highlighting IT's strategic role in institutional success
- Special thanks:
  - **Dirk Huggett**  
Assistant CIO, Administration  
North Dakota University System
  - **John Rathje**  
Vice President for Information Technology and  
Chief Information Officer  
Kent State University



# Facilitator



**John Dunning**  
*Assistant Chancellor*  
University of Wisconsin-  
Platteville

# Holistic Approaches to IT Challenges

What to expect from this session....

- What does holistic mean in this context?
- Why is a holistic approach important?
- How is IT unique in its ability to operate holistically?
- What are the challenges to holistic operation?
- What practical tools do you use to operate holistically?

# Holistic Approaches to IT Challenges

## What does holistic mean?

Each unit is both part of a larger whole and composed of smaller units...

A human is made of cells.

A family is made of humans.

A community is made of families.

A nation is made of communities...

- Interconnected
- You can explain a part only through reference to the whole
- Systems theory/thinking



<https://images.app.goo.gl/71vzKhprBnBjdJeu6>



# Holistic Approaches to IT Challenges

## Why is a holistic approach important (or even valid?)

- Interconnected
  - What happens when IT changes something without communicating/seeking input?
  - What happens when another part of the organization changes something without consulting IT?
- You can explain a part only through reference to the whole
  - What is a Higher Ed IT office without students? Without faculty?
- Systems theory/thinking
  - Exceptional complexity of today's higher education operations and solutions environment.

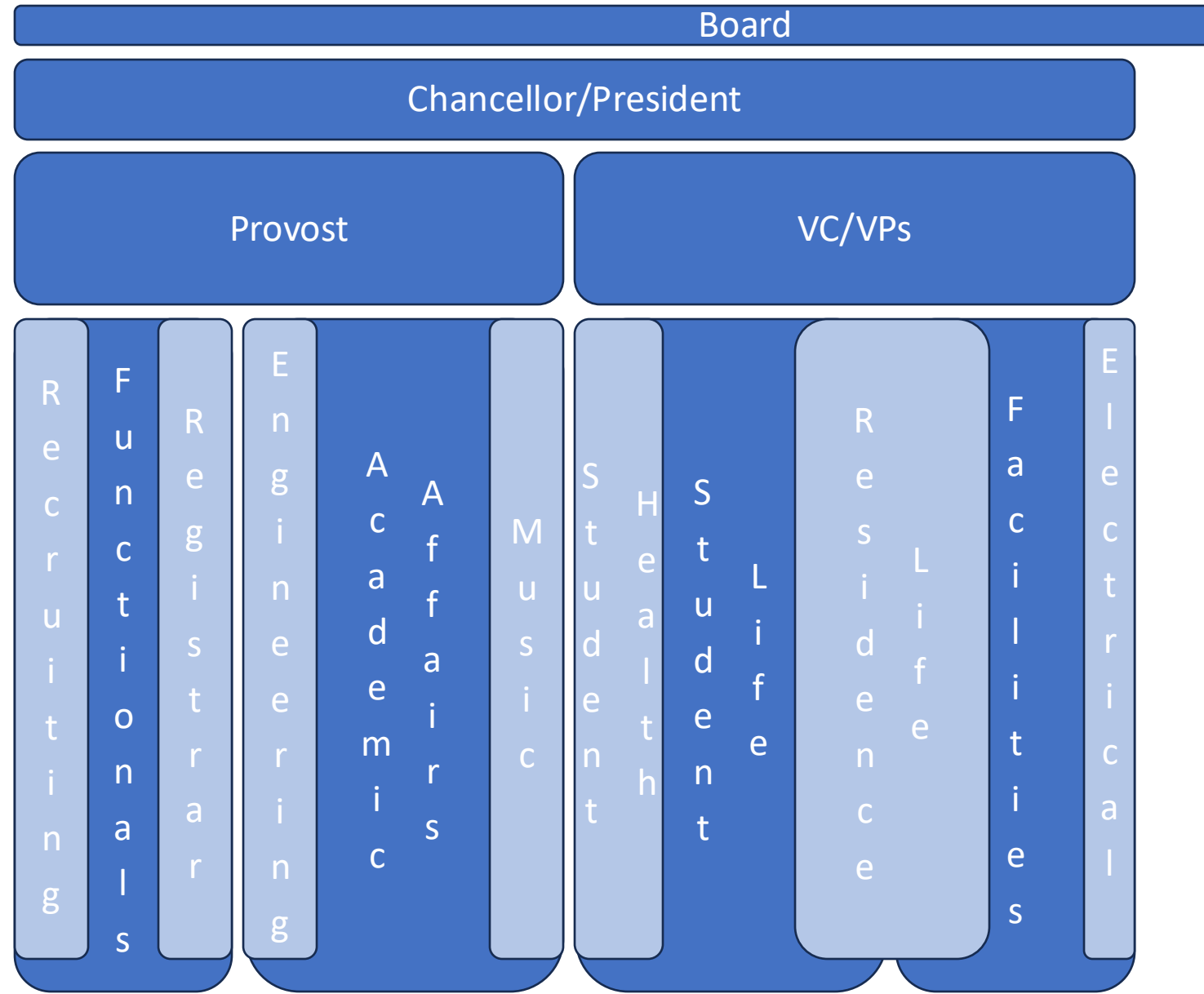


<https://images.app.goo.gl/71vzKhprBnBjdJeu6>

# Holistic Approaches to IT Challenges

## How is IT unique in its ability to be operate holistically?

- Generalist expertise....
  - Know a little bit about everything
  - “Broad knowledge”
- Specialist expertise....
  - Know a whole lot about a narrow area
  - “Deep knowledge”

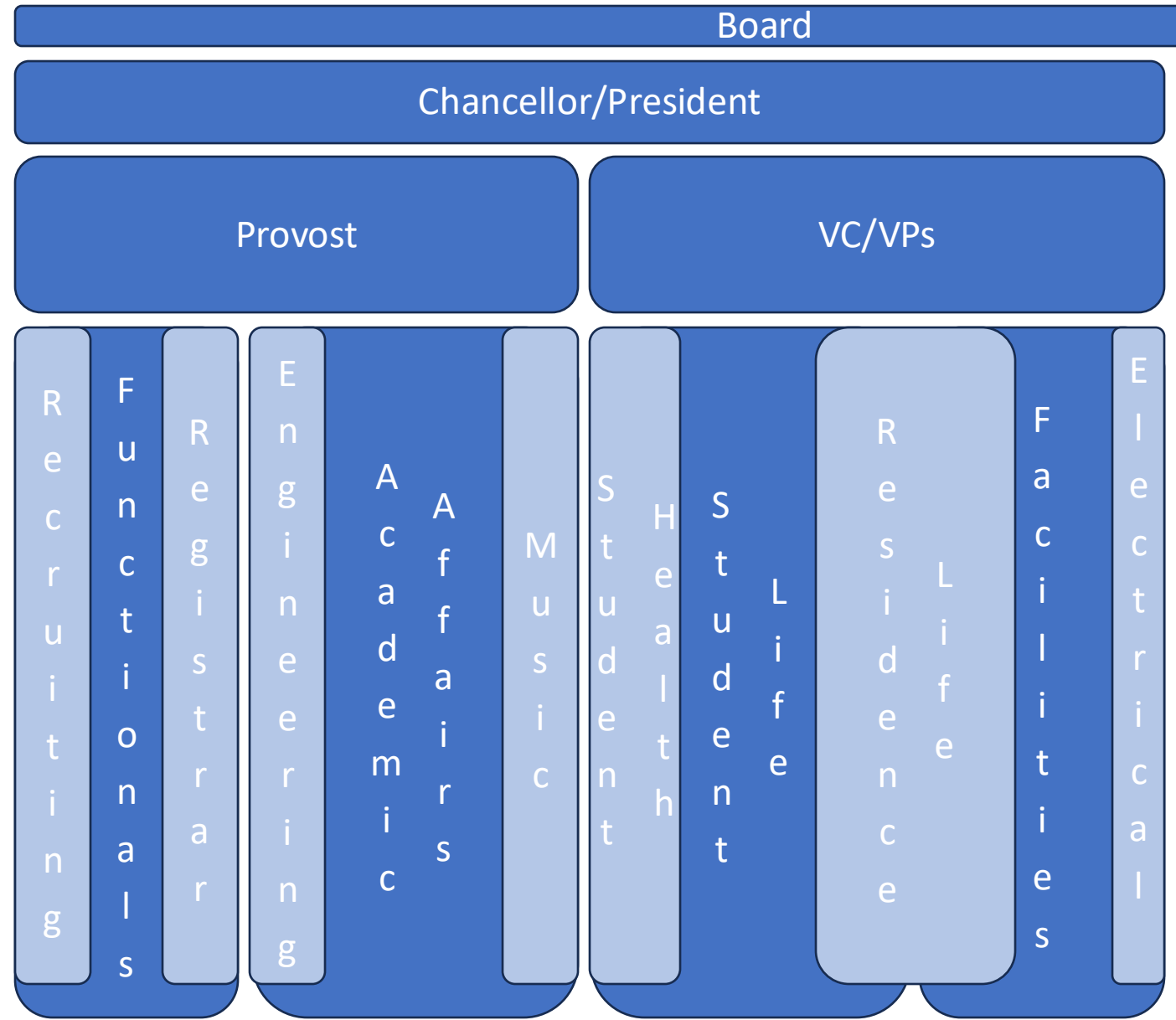




# Holistic Approaches to IT Challenges

## How is IT unique in its ability to be operate holistically?

- Where is IT in this????
- (Where is IT NOT in this???)
- IT has unparalleled coverage in both Breadth and Depth
- **What do you see at your institution?**



# Holistic Approaches to IT Challenges

## What are the challenges to holistic operation?

- Breadth & Depth
  - A phenomenal amount of information within one organization...
  - Unequalled exposure to risk indicators (and to opportunity indicators as well)
- Resource constraints (esp. when poorly managed)
- Cultures of blame or toxic competition
- **What do you experience??**



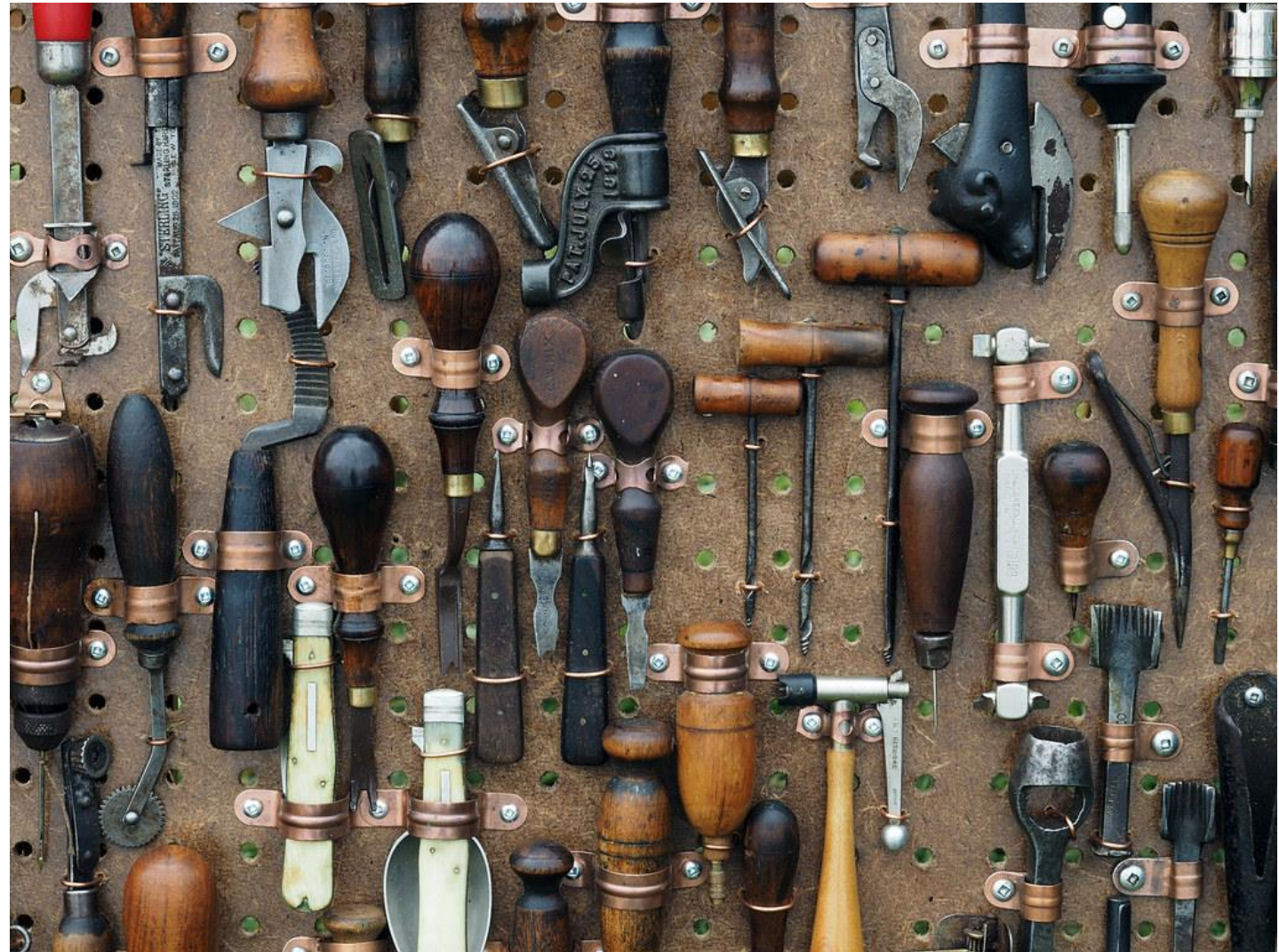
<https://images.app.goo.gl/wcVLBUimbvSSnWc9>



# Holistic Approaches to IT Challenges

## What practical tools do you use to operate holistically?

- A unified mission for IT
  - Institutional Strategic Plan
  - Common understanding of values and operating principles
- Pronouns
  - Our vs my.
  - We vs I.
  - Us vs. Them.
  - The one exception??
- Listen. Listen. (then listen some more)
- Do our own internal work
  - My personal challenges:
    - Defensiveness
    - The “Need to be Right”
- **What works for you??**



<https://images.app.goo.gl/9HJ7sE6fwFrCU22M9>

# *Conveying the Value of Information Technology*

- A peer guide to IT governance, highlighting IT's strategic role in institutional success
- Questions?? Comments??
- [dunningj@uwplatt.edu](mailto:dunningj@uwplatt.edu)



# MHEC IT Leadership Launchpad Series: Transforming Real-World Challenges into Triumphs

- ✓ Breaking Down Silos: Communication Strategies That Work
  - September 24, 2024, 1:30 p.m. CT
- ✓ Culture Club: Navigating Your Institution's Unique Landscape
  - October 8, 2024, 1:30 p.m. CT
- ✓ Agility Bootcamp: Fostering Innovation in Times of Change
  - October 29, 2024, 3:00 p.m. CT
- ✓ Connecting the Dots: Holistic Approaches to IT Challenges
  - November 12, 2024, 3:00 p.m. CT
- Hidden Gems: Maximizing Your Current IT Assets
  - December 10, 2024, 3:00 p.m. CT