

MISSOURI HIGHLIGHTS

2023-2024

OVERVIEW

Missouri enacted authorizing legislation in 1990 to join the Midwestern Higher Education Compact (MHEC). Over the past 35 years, commissioners, commissioner alternates, and members of advisory committees from Missouri have provided and continue to provide important governance and strategic direction for MHEC.

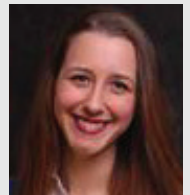
HOW MHEC BENEFITS MISSOURI

- ▶ **\$9.88M in total annual savings.** Missouri colleges, universities, school districts, state and local governments, and students and their families realized more than \$9.88M in cost and time savings through MHEC's contracts and programs.
 - » *Technology Contracts.* Missouri entities saved \$3.05M through MHEC contracts with Dell, Oracle, CampusGuard, Lenovo, and others.
 - » *Distance Education.* By participating in the Midwestern-State Authorization Reciprocity Agreement (M-SARA), Missouri saved approximately \$3.21M and avoided a costly state-by-state, institution-by-institution approach.
 - » *Tuition Reciprocity.* Missouri students and their families who participated in the Midwest Student Exchange Program saved \$3.61M.
 - » *Property Insurance.* Twelve Missouri institutions received dividends totaling \$168,622 for participating in MHEC's Master Property Insurance Program.
- ▶ **Strong return on investment.** Missouri received a 86-fold return on annual compact membership commitment of \$115,000.
- ▶ **Open Educational Resources.** MHEC supported Missouri with grant funds to provide training sessions to help participants expand their knowledge and technical capacity around OER licensing and copyright.
- ▶ **Professional Development and Support.** Eight Missouri leaders attended MHEC's FAFSA Summit. Four technology leaders engaged in MHEC's free professional development and networking.

COMMISSIONERS



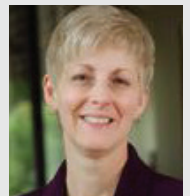
Brad Christ
Missouri General
Assembly, State
Representative



Samantha Dickey
Missouri Department
of Higher Education
& Workforce
Development,
Assistant
Commissioner for
Postsecondary Policy



David Pearce
University of
Central Missouri,
Executive Director
for Government
Relations



Susan Thomas
Truman State
University, President



Curtis Trent
Missouri General
Assembly, State
Senator



The Midwestern Higher Education Compact seeks to improve individual career readiness and regional economic vitality through collective problem-solving and partnerships that strengthen postsecondary education. To achieve this vision, the Compact focuses its work in three strategic priority areas:

INCUBATE

Advance innovation, efficiency & effectiveness

- » Serve as an incubator, studying challenging topics where MHEC can play a valuable role and piloting potential solutions.
- » Lead in expanding use and utility of open educational resources.
- » Respond rapidly to member states' requests for research on pressing topics such as workforce development, loan forgiveness programs, and college affordability.
- » Provide state-by-state data through an interactive dashboard on key performance indicators including preparation, participation, affordability, completion, finance, and workforce.

LAUNCH

Develop collaborative solutions to regional problems and opportunities

- » Take on projects, issues and opportunities that are too big for one state to do alone, working jointly to improve higher education and to strengthen the Midwest region.
- » Convene and connect higher education leaders to navigate timely and critical issues facing higher education, such as FAFSA, distance education delivery, and tuition reciprocity.
- » Help Midwestern states navigate accreditation standards to meet the significant increase in demand for dual and concurrent enrollment.

SAVE

Drive cost savings & business solutions

- » Leverage the combined technology needs of higher education institutions in member states to reach favorable agreements with technology vendors that result in tremendous time and cost savings.
- » Explore opportunities to serve risk management needs.
- » Offer affordable solutions that improve student well-being.