

DEPARTMENT OF  
**HIGHER EDUCATION &  
WORKFORCE DEVELOPMENT**

Midwestern Higher Education Compact  
June 3, 2024

**Dr. Bennett Boggs, Commissioner**

Missouri's approach to higher education and workforce development.

Utilize a  
unique  
model

Address  
perennial  
challenges

Develop  
innovative  
solutions

Missouri's approach to higher education and workforce development.

Utilize a  
unique  
model

Address  
perennial  
challenges

Develop  
innovative  
solutions

# Our Purpose



## VISION

Every Missourian empowered with the skills and education needed for success.



## MISSION

To put Missourians on a path to learn, work, and prosper.

- Governor's Cabinet-level agency created in 2019
- Only state to truly integrate workforce development with coordination of higher education

## PRINCIPLES THAT GUIDE OUR WORK



### PEOPLE CENTERED

Engage and connect MDHEWD teams, partners, institutions, and employers on behalf of Missourians.



### EQUITY FOCUSED

Close educational attainment and workforce participation gaps among key sub-populations.



### IMPACT DRIVEN

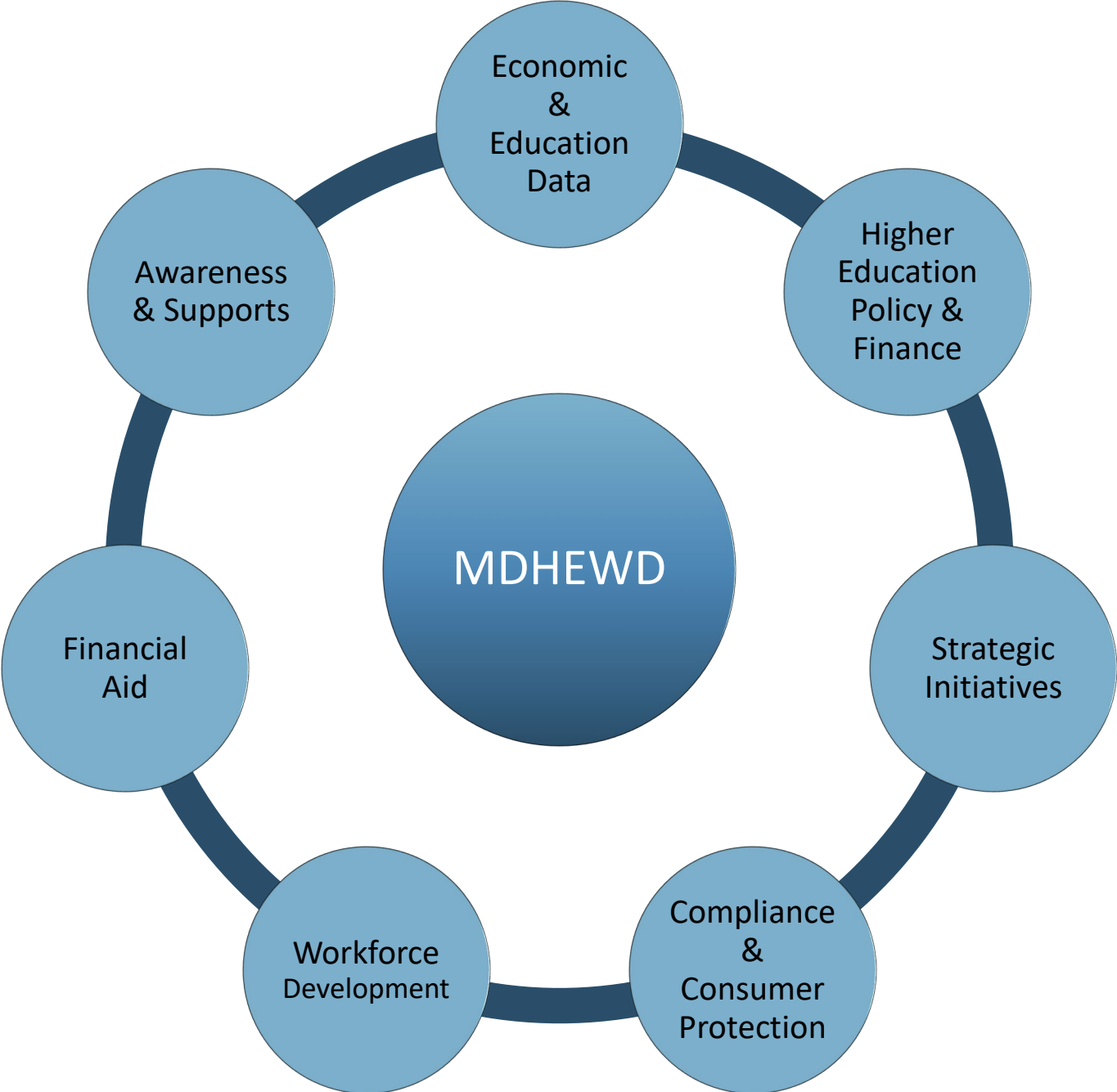
Aim for optimal results and continuous improvement across all programs and services.



### WORKFORCE ALIGNED

Align efforts with the changing needs of employers to build a skilled and prepared workforce.

# MDHEWD's broad scope of work



Missouri's approach to higher education and workforce development.

Utilize a  
unique  
model

Address  
perennial  
challenges

Develop  
innovative  
solutions

# BIG GOALS FOR MISSOURI

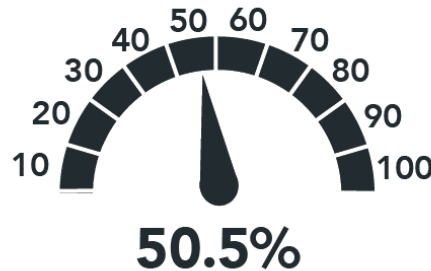
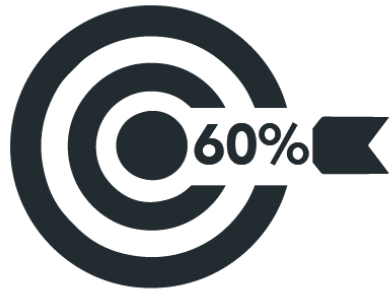
Best in the Midwest in **educational attainment** and workforce participation by 2030

## BEST IN MIDWEST TARGETS

Current Targets

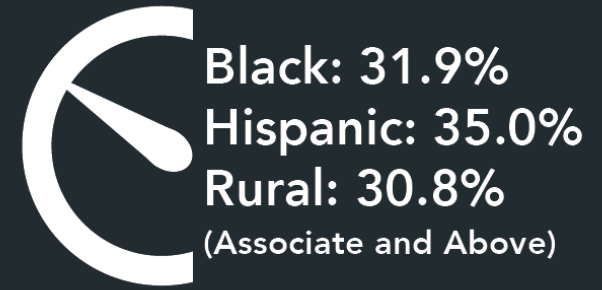
Current Status

Educational Attainment



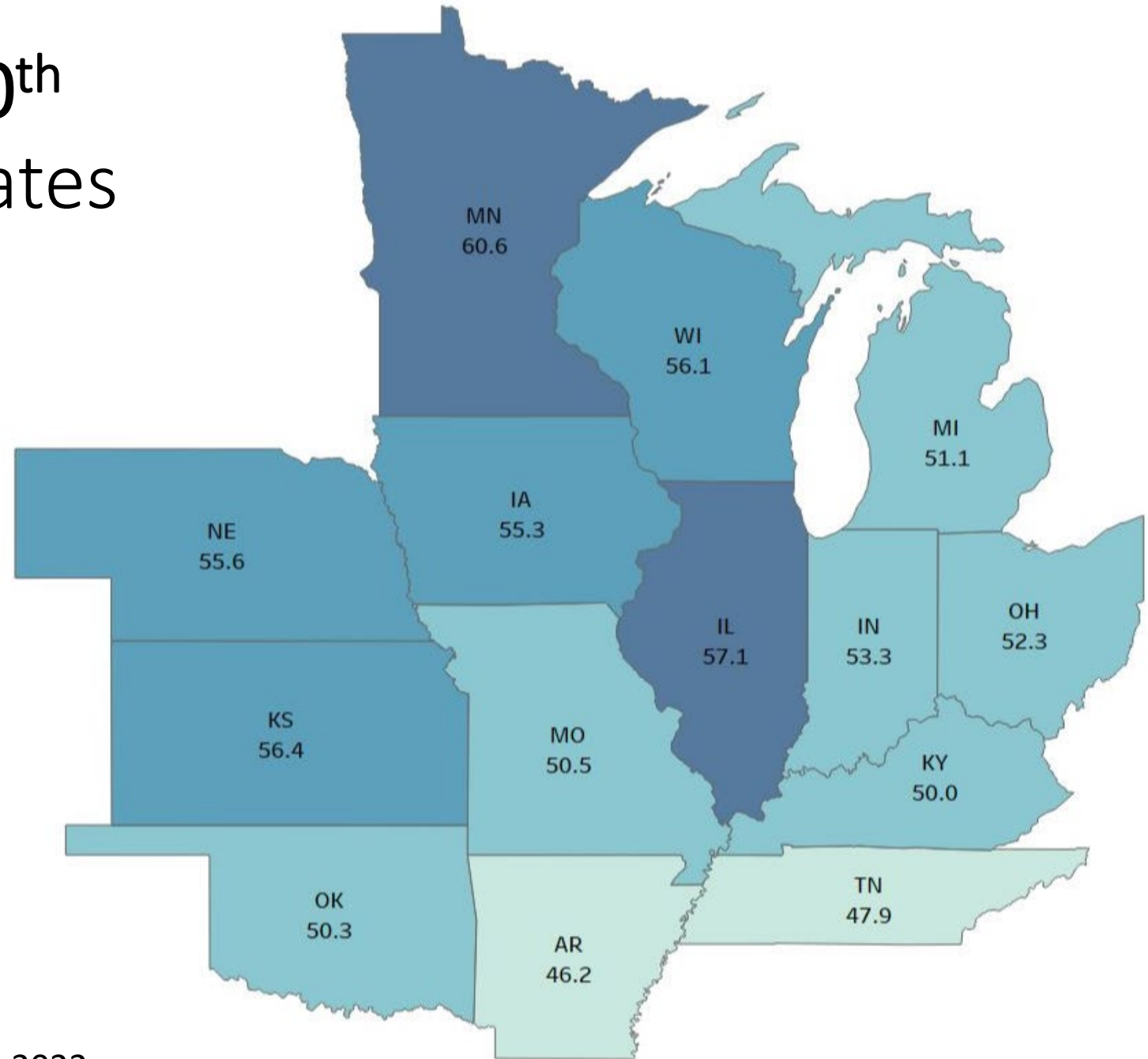
## EQUITY FOCUS

Current Status



Missouri ranks 10<sup>th</sup>  
among the 14 states  
in the region in  
postsecondary  
attainment

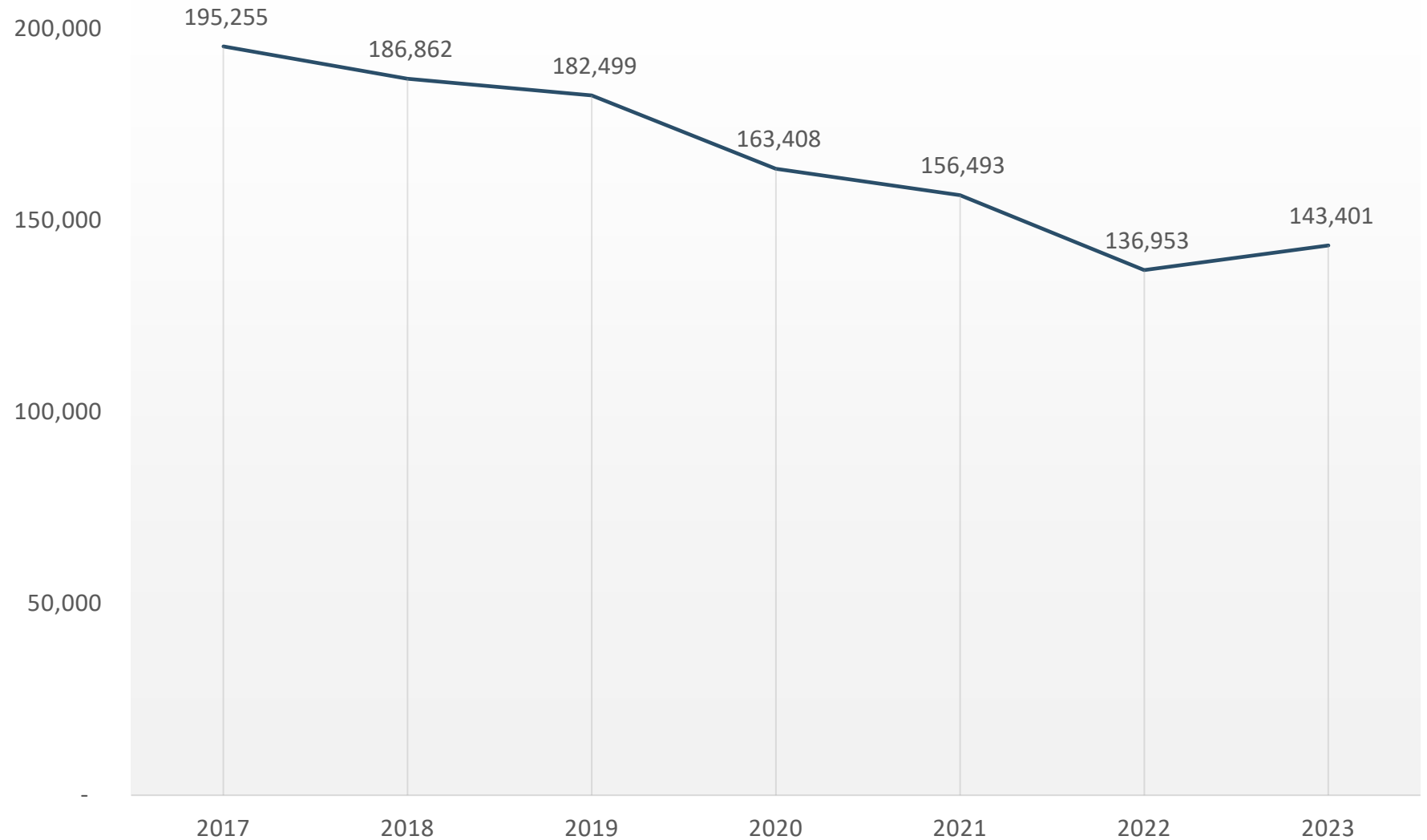
---





# Declining enrollments are starting to rebound

- Since 2019, enrollment decreased 21.4%.
- Enrollments rebounded in Fall of 2023 by 4.7%.



# BIG GOALS FOR MISSOURI

Best in the Midwest in educational attainment and workforce participation by 2030

## BEST IN MIDWEST TARGETS

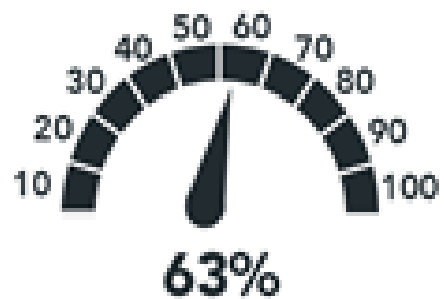
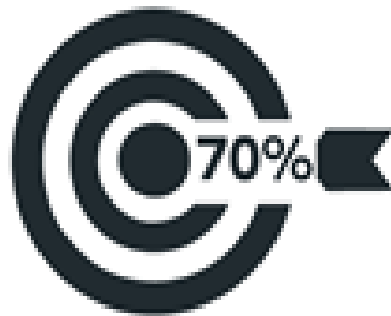
## EQUITY FOCUS

Current Targets

Current Status

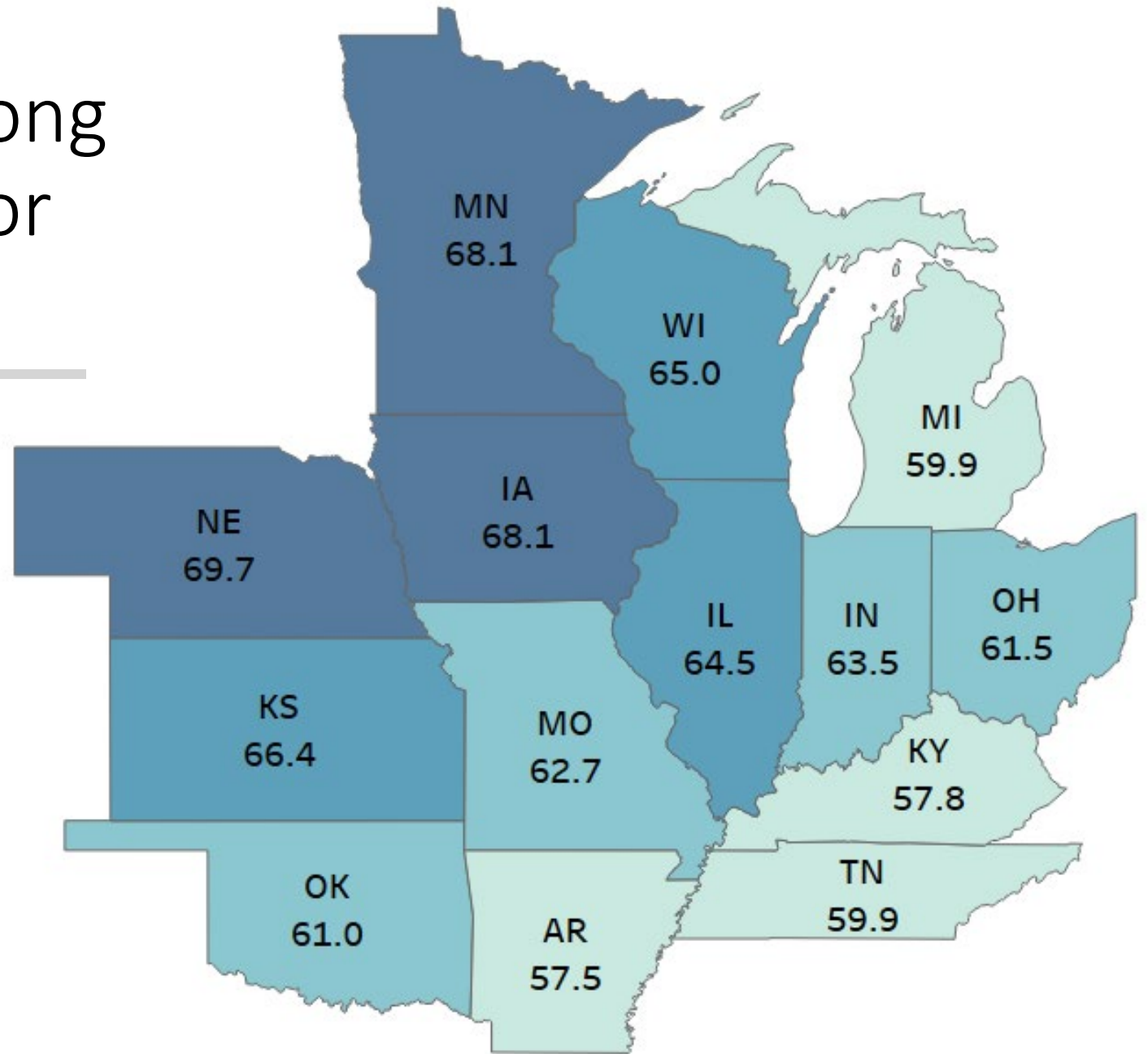
Current Status

Labor Force Participation

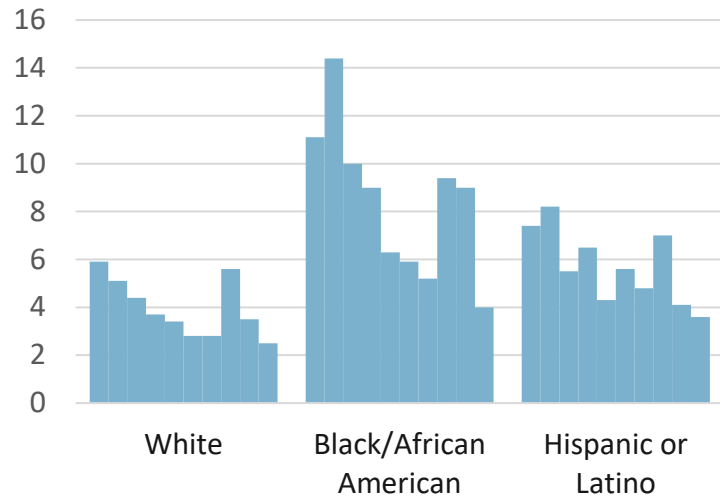


Black: 63.5%  
Hispanic: 64.8%  
Rural: 55.5%

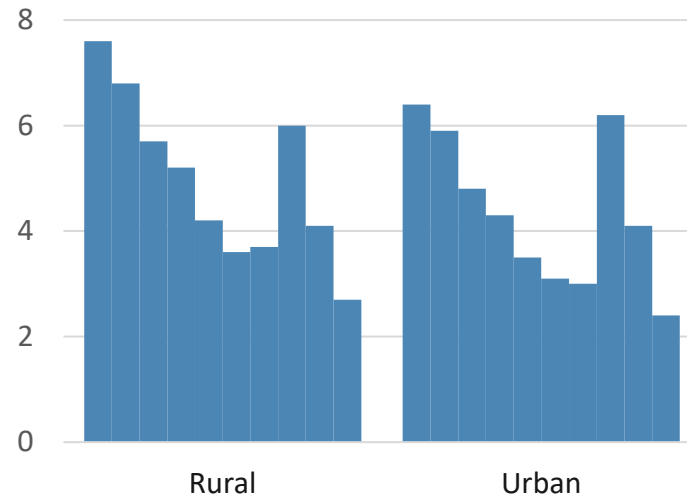
# Missouri ranks 8<sup>th</sup> among Midwest states in labor force participation



Unemployment Rates 2011-2022 by Race/Ethnicity

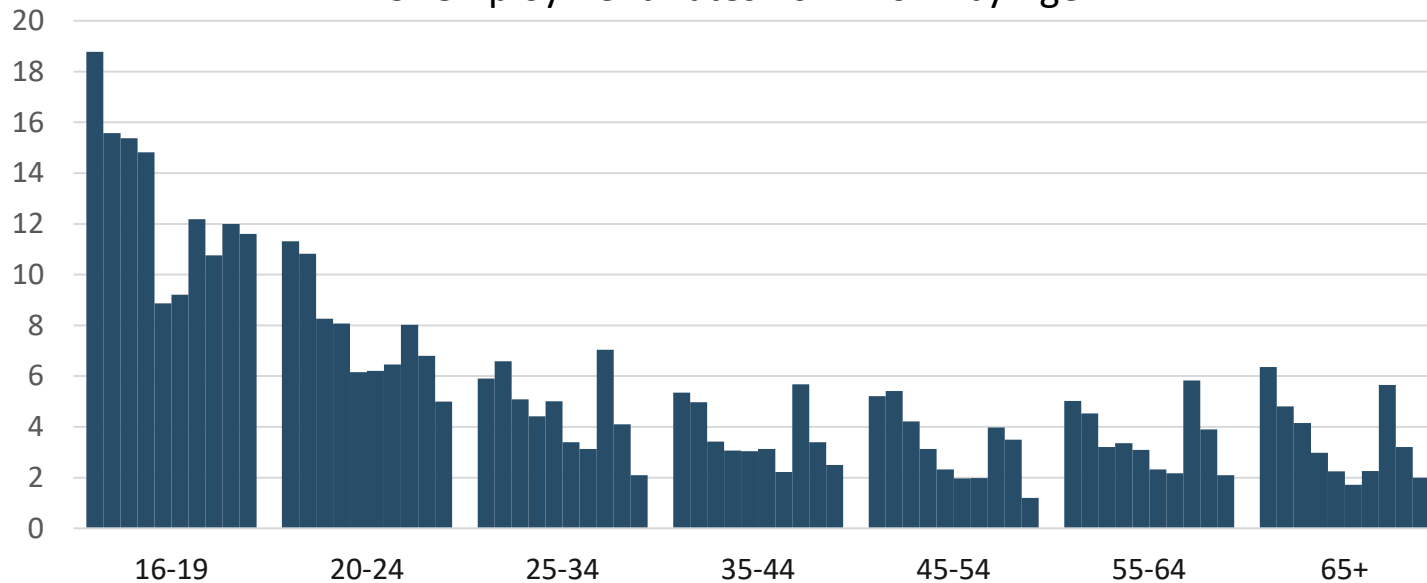


Unemployment Rates 2011-2022 by Geographical Origin



Unemployment rates have decreased but are unequal across sub-populations

Unemployment Rates 2011-2022 by Age



U.S. Bureau of Labor Statistics. Current Population Survey and Local Area Unemployment Statistics.

Missouri's approach to higher education and workforce development.

Utilize a  
unique  
model

Address  
perennial  
challenges

Develop  
innovative  
solutions

# Research & Data



Conduct employer surveys



Publish the Missouri Jobs Report



Provide Missouri and regional economic reports and labor supply/demand



Analyze occupational projections and career pathways



Understand Missouri jobs and education and skill requirements



Develop a P20W data center

## Higher education policy & initiatives



**M**  **Excels**

- Lead a statewide Adult Learner Network
- Champion support for transfer students
- Convene leaders to focus on rural and disadvantaged students
- Partner to support justice-involved individuals
- Share best practices addressing students' basic needs
- Facilitate employer-driven education and training pathways offered by higher education institutions.

## Workforce Development

---



MO HEROES  
CONNECT



- **23 Job Centers:** Support 70,000 job seekers with job search, preparation, and work-based learning
- **42,000 apprentices:** Manage registered apprenticeship training providing paid training opportunities
- Promote hiring of **Veterans** and provide training opportunities
- Facilitate **work-ready communities** to develop skilled workforces
- Conduct **rapid response** services for laid-off workers



# Financial Aid

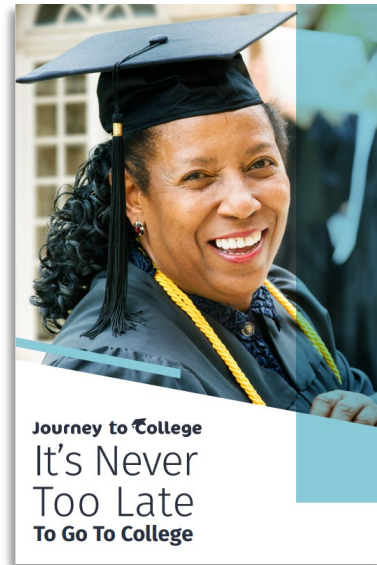
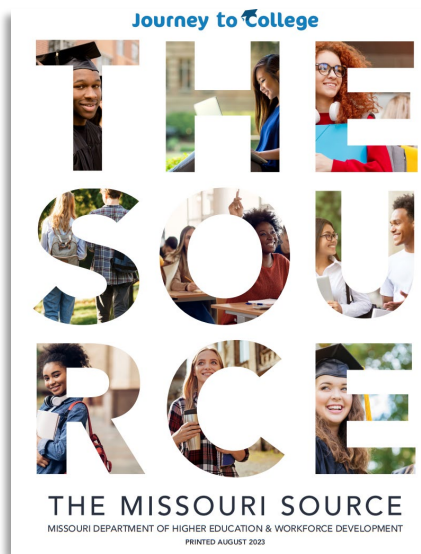


Manage state financial aid programs improving affordability for Missourians.

- A+ Scholarship
  - Merit-based for high school students attending two-year colleges.
- Access Missouri
  - Need-based program providing access and choice to lower income students.
- Bright Flight
  - Merit-based program encourages top-ranked seniors to attend Missouri institutions.
- Dual Credit/Enrollment Scholarship
  - Need-based for high school students to cover eligible college coursework.
- Fast Track Incentive Grant
  - Support for adults entering high-demand fields.

# Outreach & Awareness

## Journey to College



- Help students plan, prepare and pay for education and training
- Provide training to high school counselors and community partners
- Develop and share free resources
- Conduct outreach statewide

# Discussion

Early lessons Missouri is learning.

Moving from  
merged to  
integrated

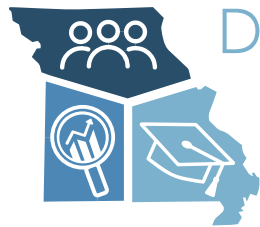
Leveraging the  
opportunity

# Thank you.

**Contact Information:**

Dr. Bennett Boggs, Commissioner

[ben.boggs@dhewd.mo.gov](mailto:ben.boggs@dhewd.mo.gov)



DEPARTMENT OF  
HIGHER EDUCATION &  
WORKFORCE DEVELOPMENT